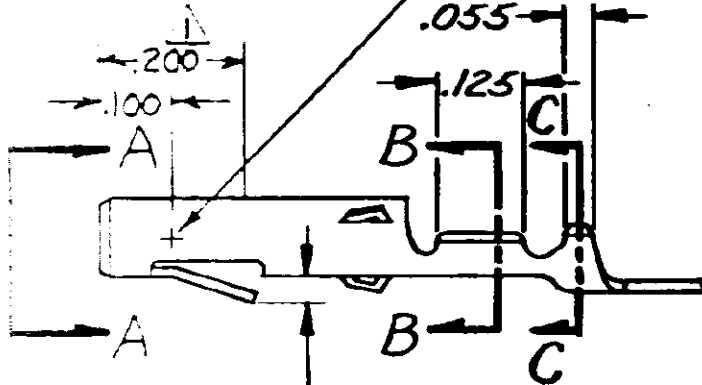


.078/.081 DIA.

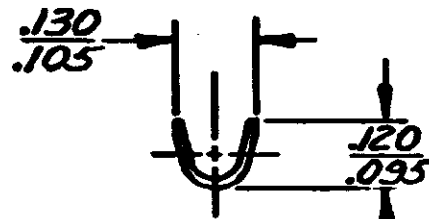


VIEW A-A

POINT OF MEASUREMENT
INSIDE OF RECEPTACLE



SECT. B-B



SECT. C-C

PART NO.	MATL & FINISH
350078-1	BRASS-PRETIN
350078-4	PH. BRZ.-PRETIN
350078-5	BRASS- Δ

Δ .000030 THK. GOLD OVER NICKEL ON INSIDE OF RECEPT. +
WIRE BARREL; REMAINDER OF CONTACT IS NICKEL PLATED.

350078-1 PER CM-821	REVISED	BY	DATE	© 1975 BY AMP INCORP. RESERVED AMP PRODUCT... PATENTS AND/OR PATENTS PENDING	CUSTOMER COPY REFERENCE ONLY
RESTORED	BD/RS	10/21/83	226-86	MATERIAL AND FINISH	
PER ECN AG 25	M/J	4/87	SEE-TABLE	AMP	AMP INCORPORATED HARRISBURG, PENNA.
ECN M-7426	JW	6/83	WIRE — RANGE — INSULATION	CLASS	— # —
REVISION RECORD	ECN	DATE	30-22 AMS .040-.075	TYPE	— # —
DESIGNED BY	ECN	DATE	TOLERANCE EXCEPT AS NOTED	SCALE	1" = 1" 0'
DESIGNED BY	ECN	DATE	± .015	LOC	CM A
DESIGNED BY	ECN	DATE	NAME	NO	350078
DESIGNED BY	ECN	DATE	MATE-N-LOK SOCKET		